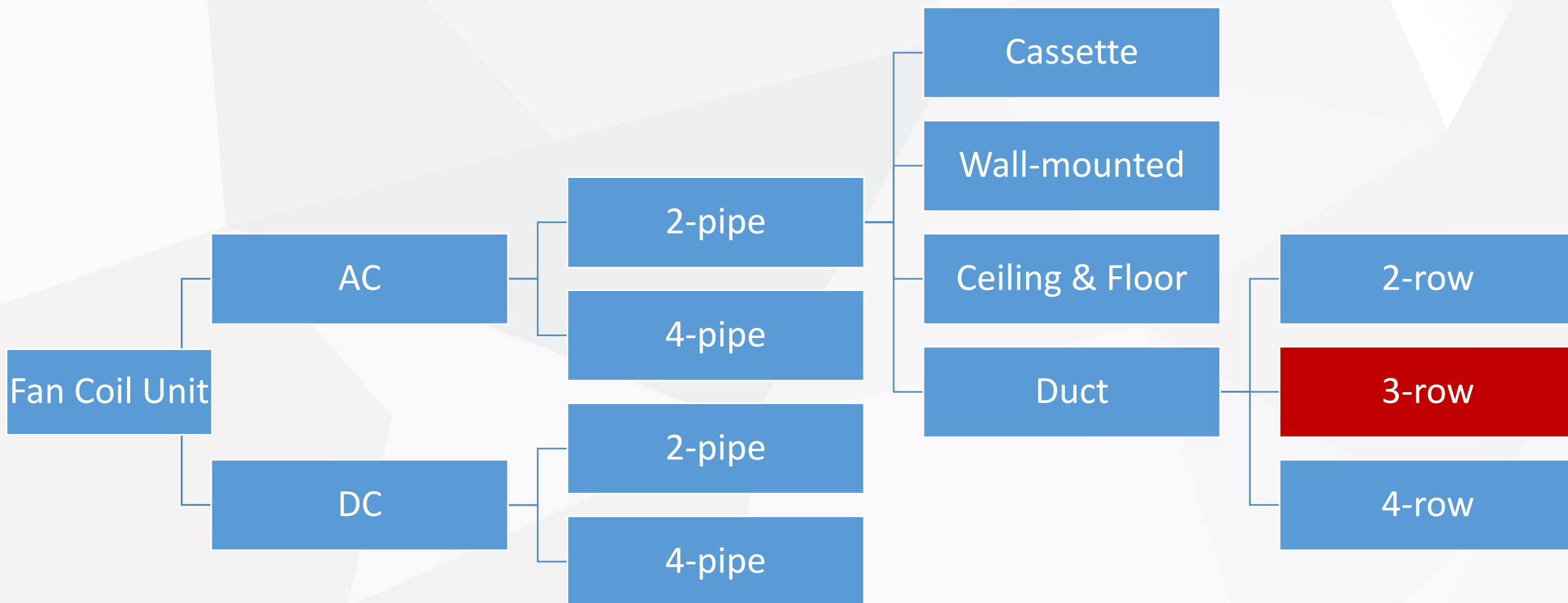


MK-CBS Series Fan Coil Introduction



Contents

- Category
- Product Lineup
- Nomenclature
- Controllers
- Dimension
- Key components
- Comparison of Different Products
- Design Highlight



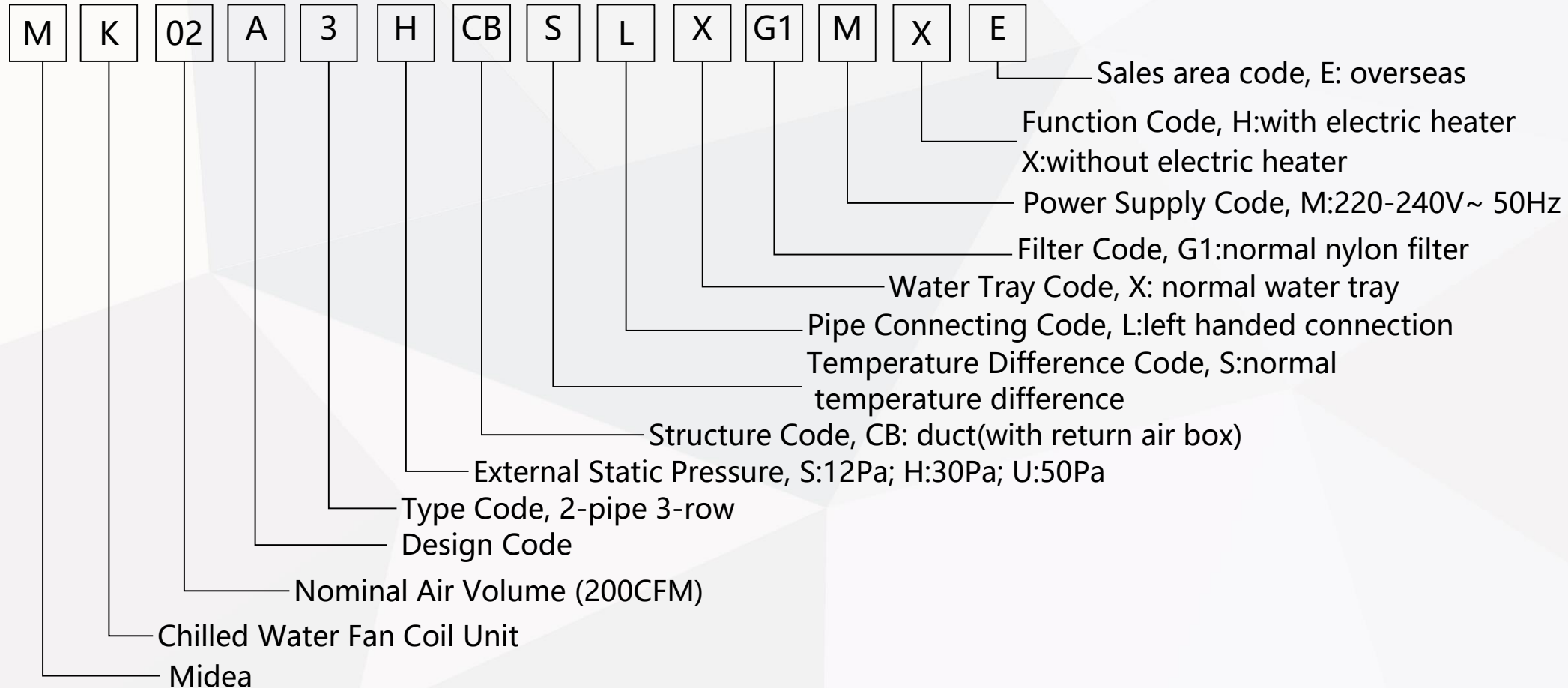
Product Lineup



Model	Static pressure	Power supply	Air flow
MK02A3SCBSLXG1MXE	12	220-	200
MK02A3HCBSLXG1MXE	30	240V~1N~50H	
MK02A3UCBSLXG1MXE	50	Z	
MK03A3SCBSLXG1MXE	12	220-	300
MK03A3HCBSLXG1MXE	30	240V~1N~50H	
MK03A3UCBSLXG1MXE	50	Z	
MK04A3SCBSLXG1MXE	12	220-	400
MK04A3HCBSLXG1MXE	30	240V~1N~50H	
MK04A3UCBSLXG1MXE	50	Z	
MK05A3SCBSLXG1MXE	12	220-	500
MK05A3HCBSLXG1MXE	30	240V~1N~50H	
MK05A3UCBSLXG1MXE	50	Z	
MK06A3SCBSLXG1MXE	12	220-	600
MK06A3HCBSLXG1MXE	30	240V~1N~50H	
MK06A3UCBSLXG1MXE	50	Z	







Model	Static pressure	Power supply	Air flow
MK07A3SCBSLXG1MXE	12	220-	700
MK07A3HCBSLXG1MXE	30	240V~1N~50H	
MK07A3UCBSLXG1MXE	50	Z	
MK08A3SCBSLXG1MXE	12	220-	800
MK08A3HCBSLXG1MXE	30	240V~1N~50H	
MK08A3UCBSLXG1MXE	50	Z	
MK10A3SCBSLXG1MXE	12	220-	1000
MK10A3HCBSLXG1MXE	30	240V~1N~50H	
MK10A3UCBSLXG1MXE	50	Z	
MK12A3SCBSLXG1MXE	12	220-	1200
MK12A3HCBSLXG1MXE	30	240V~1N~50H	
MK12A3UCBSLXG1MXE	50	Z	
MK14A3SCBSLXG1MXE	12	220-	1400
MK14A3HCBSLXG1MXE	30	240V~1N~50H	
MK14A3UCBSLXG1MXE	50	Z	

Nomenclature

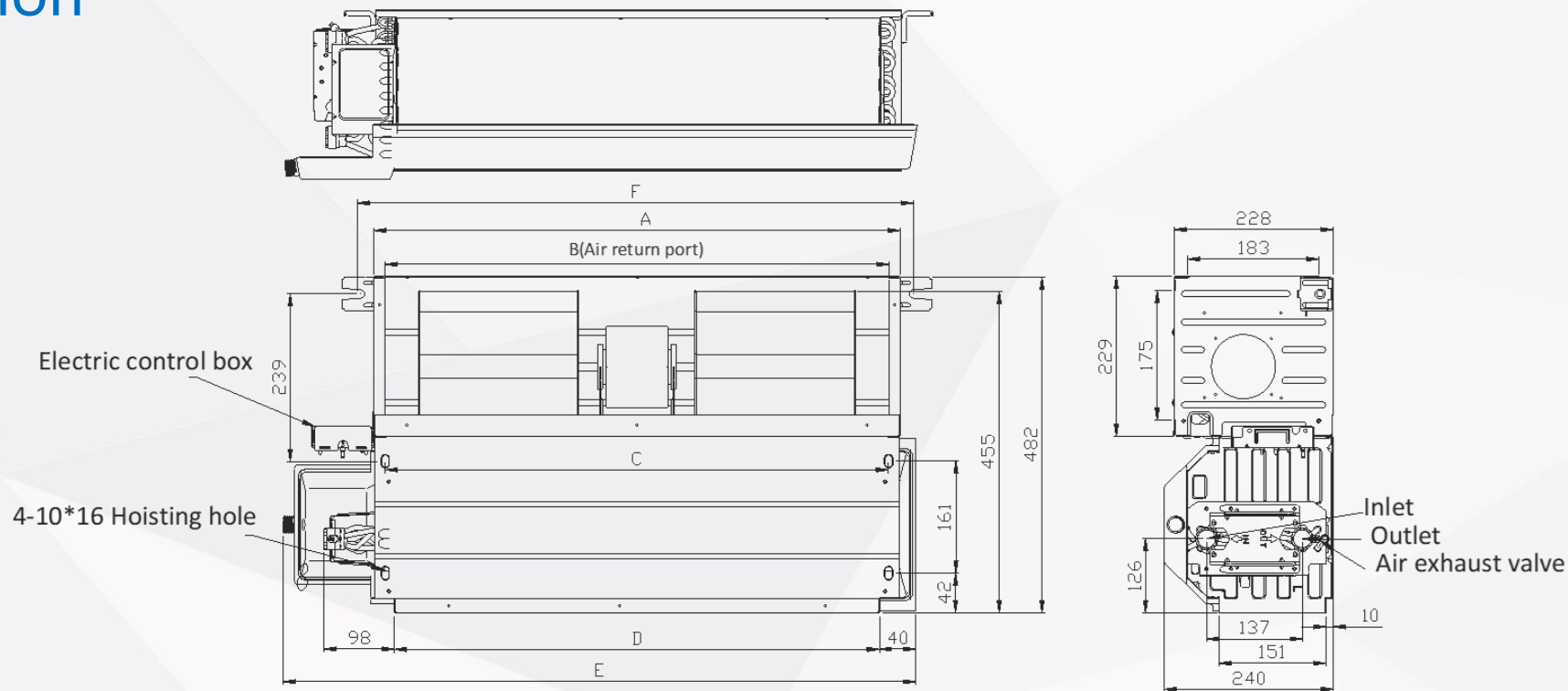


Controllers



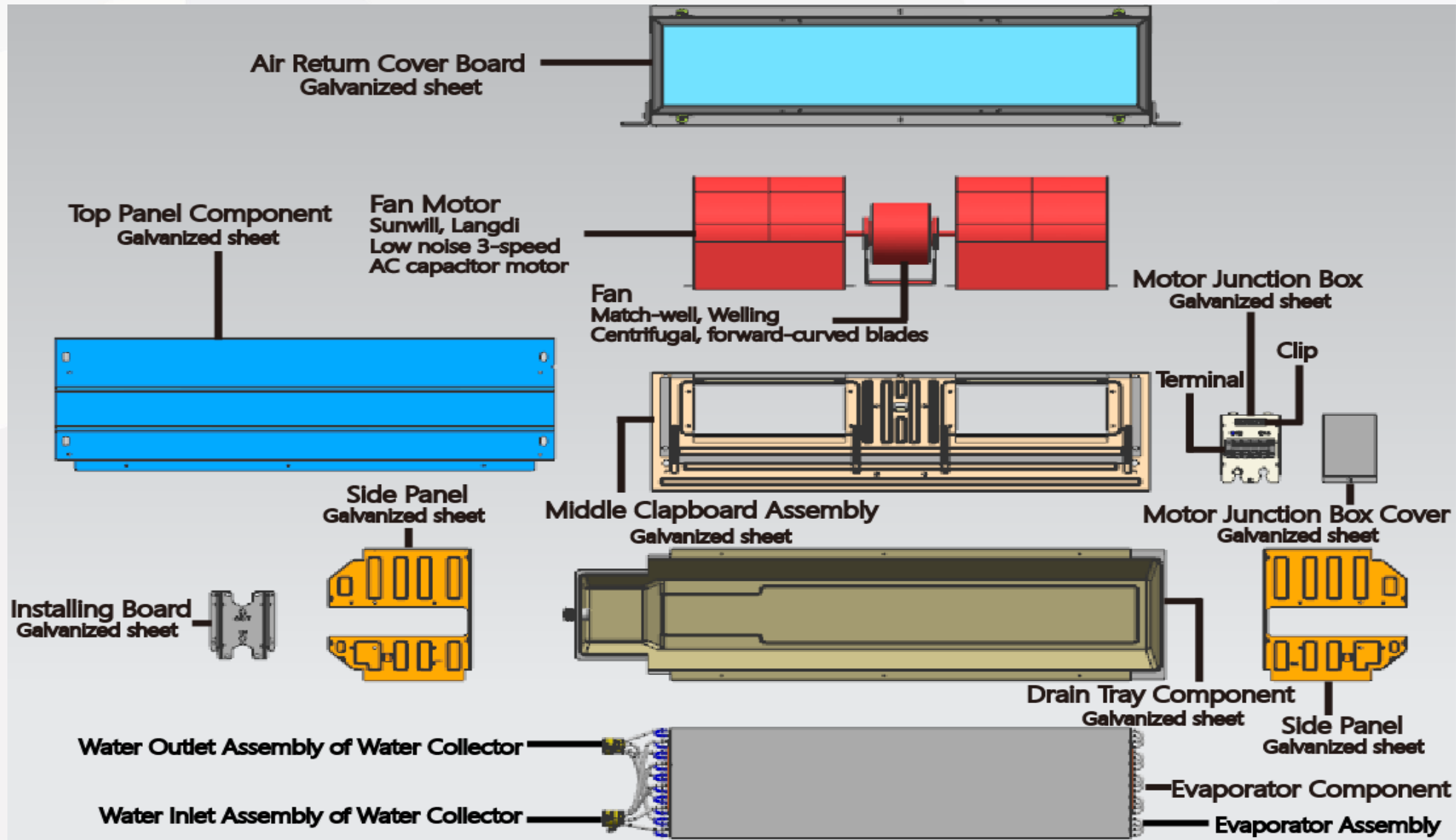
Model	PCB control kit CE-FCUKZ-03	Remote controller RM05/BGE	Remote controller R51/E	Wired controller KJR-18B/E	Wired controller KJRP-86A/I	Centralized controller CCM30
Shape						
Usage	Electric control	Remote control	Remote control	Wired control	Wired control	Centralized control

Dimension

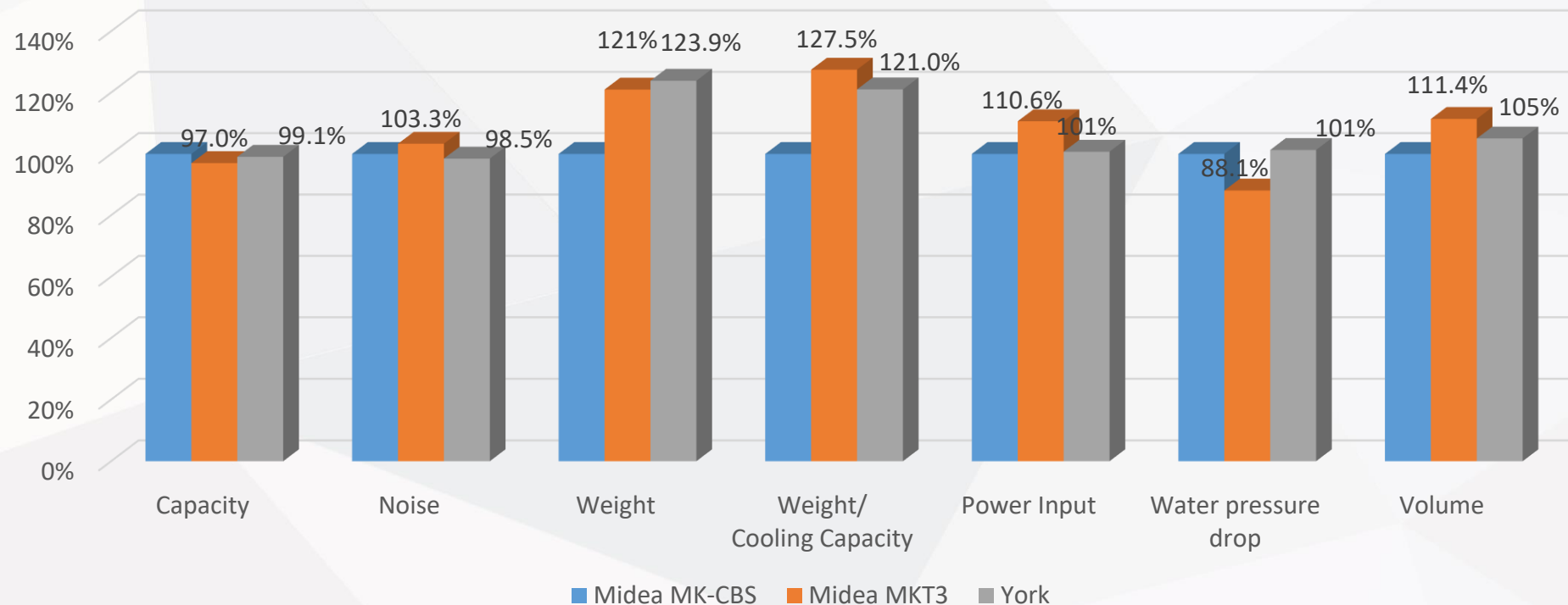


Model Size	02-model	03-Model	04-Model	06-Model	07-Model	08-Model	12-Model	14-Model
			05-Model			10-Model		
A	475	620	755	850	1025	1215	1505	1745
B	443	588	723	818	993	1183	1473	1713
C	443	588	723	818	993	1183	1473	1713
D	415	560	695	790	965	1155	1445	1685
E	627	772	907	1002	1177	1367	1657	1897
F	513	658	793	888	1063	1253	1543	1783

Key Components



Comparison of different products



Product	Capacity	Noise	Weight	Weight/Cooling Capacity	Power Input	Water Pressure Drop	Volume
Midea MK-CBS	100%	100%	100%	100%	100%	100%	100%
York	99.1%	98.5%	123.9%	121.0%	101%	101%	105%
Midea MKT3	97%	103.3%	121%	127.5%	110.6%	88.1%	111.4%

The pressure drop of MK-CBS series is bigger, because the MKT3 is the diameter of pipe change 9.52mm into 7mm.
 The noise is louder than York.
 The other parameters are basically the best.

Comparison of different products



Comparison Item	Conclusion	Competitor	Midea MKT3
Average Total Capacity	MK-CBS >Competitor MK-CBS>Old Product	1.4%	3.3%
Average Power Input	MK-CBS≈Competitor MK-CBS>Old Product	-0.6%	-9.8%
Average Noise	MK-CBS≈Competitor MK-CBS≈Old Product	1.0%	-2.7%
Average Water Pressure Drop	MK-CBS>Competitor MK-CBS<Old Product	-3.1%	13.08%
Average Net Weight	MK-CBS >Competitor MK-CBS>Old Product	-19%	-14%
Average Length	MK-CBS >Competitor MK-CBS>Old Product	-5%	-9%
Fan Type	MK-CBS is the least, 2 type	3 type	3 type
Fan Motor Quantity	MK-CBS is the least.	13 fan motor used in the whole series.	14 fan motor used in the whole series.

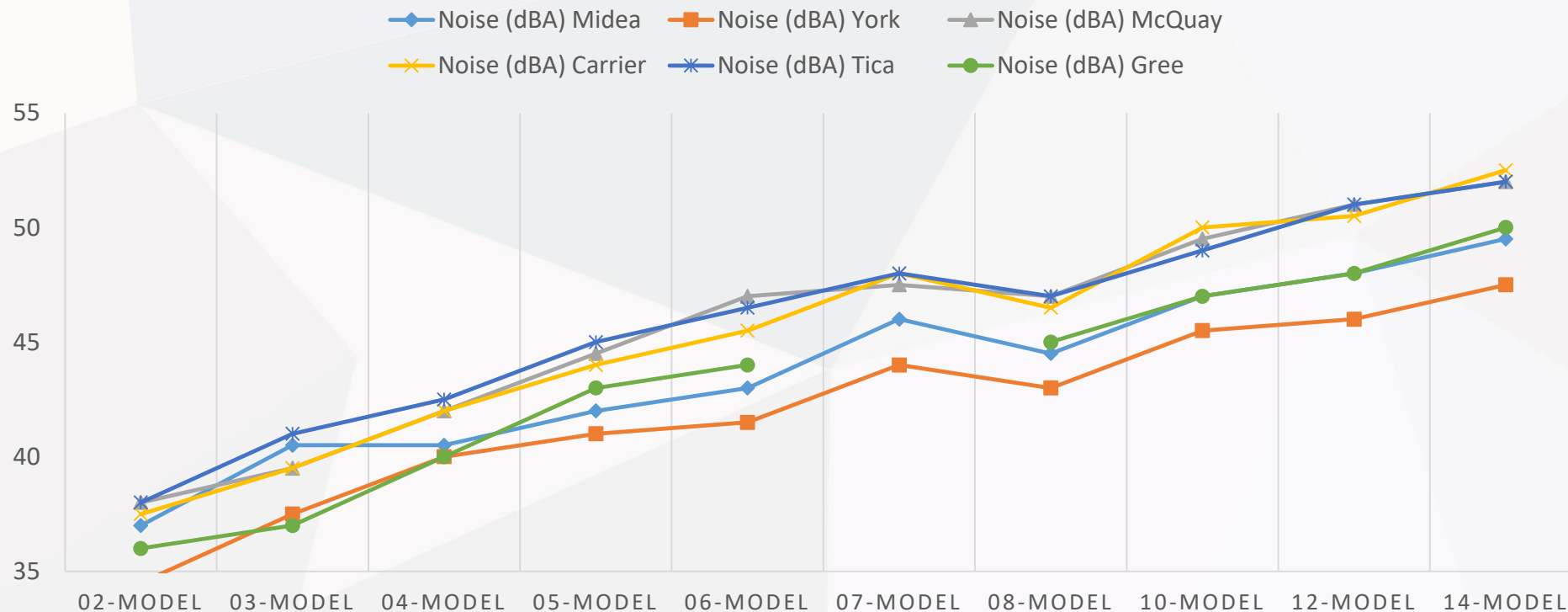
Note: ">" indicates that the parameter is better, not a simple comparison of data values.

Thanks to the improvement of heat exchange efficiency, the new platform MK-CBS series FCU has a smaller size and weight when the capacity and energy efficiency is better than that of the MKT3/competitive products.

Comparison of different products

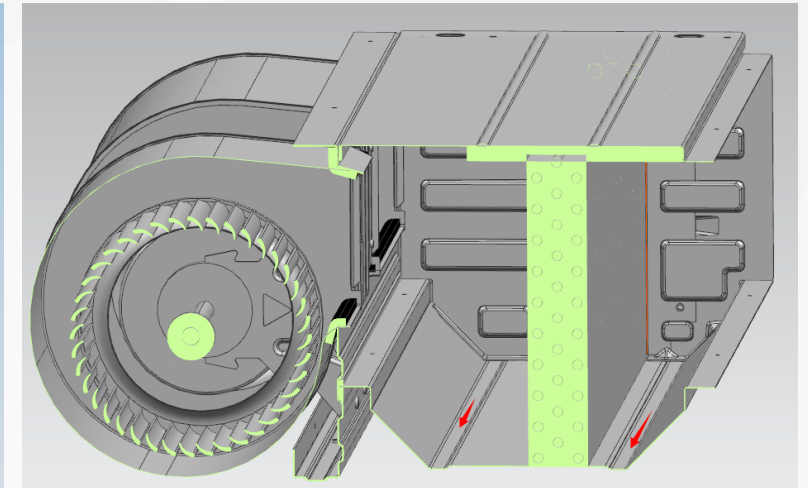
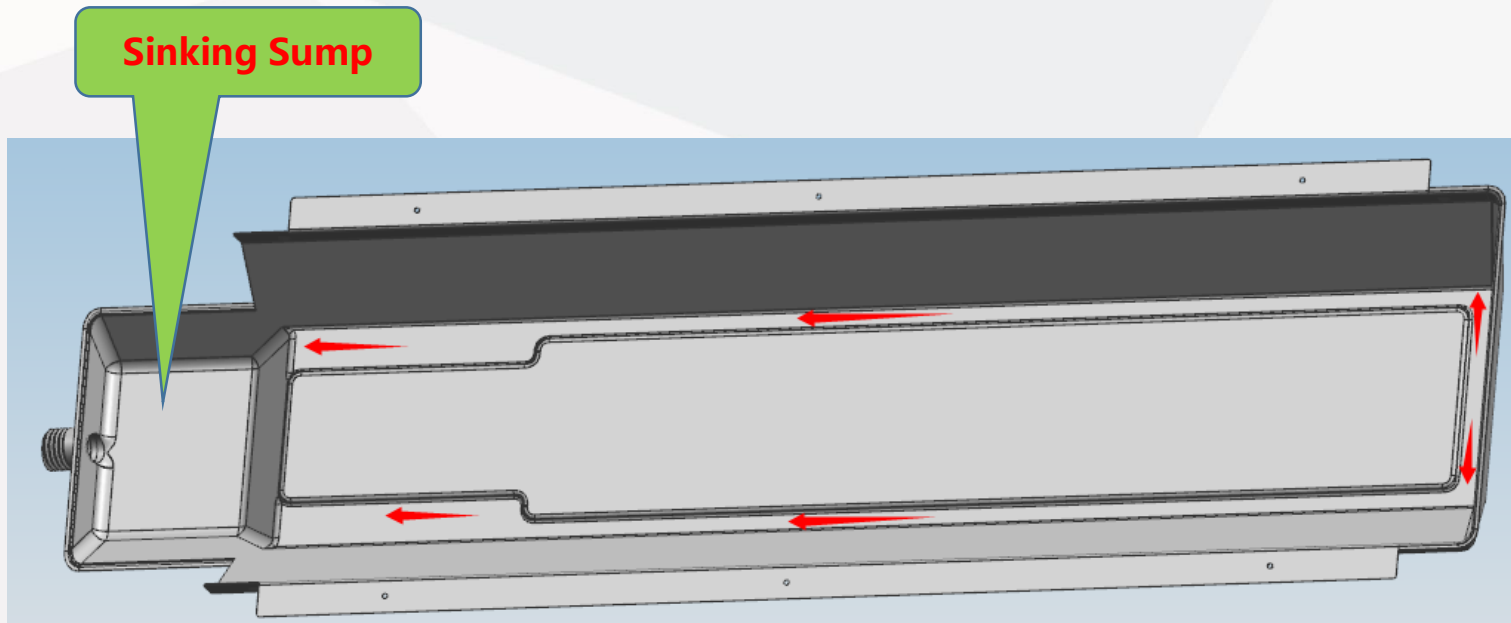


MK-CBS series have lower noise, which are on average 0.5dB lower than MKT3 working with high fan speed, at the leading in the industry.



◆ Optimize drainage technology (improve heat exchange effect and reduce air leakage):

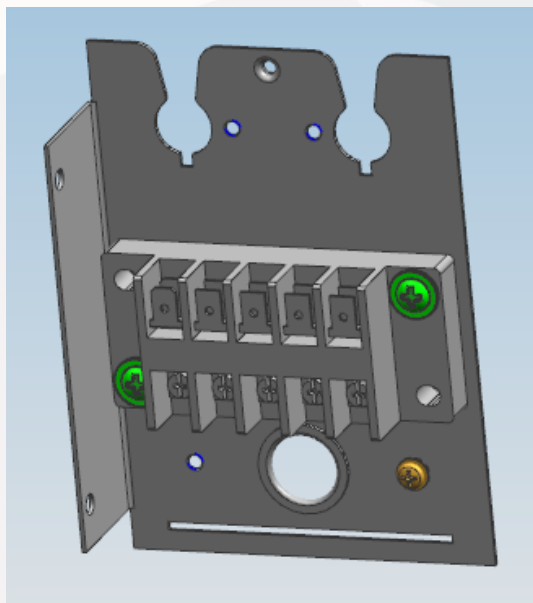
The drain pan is changed to a convex in the middle and a drainage design with grooves around it can effectively prevent water intrusion from the heat exchanger. Compared with the old product, the design of drainage on both sides is concentrated in the middle. The drainage is smoother and effectively reduces air leakage. Rate (the measured positive and negative deviation is reduced from 9% of the old product to 4.2% of the new product), a 200mm auxiliary drain pan can be customized to leave enough space for the installation of two-way/three-way water valves.



Design highlight

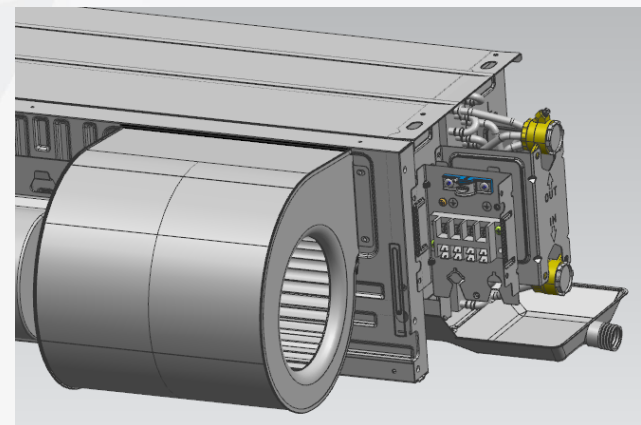
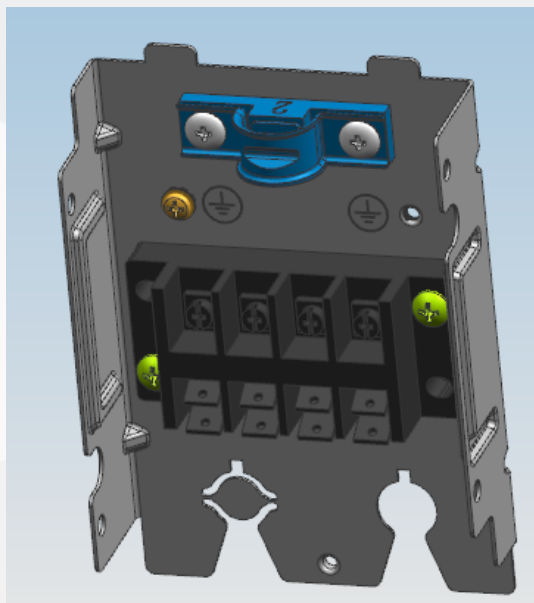
- ◆ Optimize the design of the electric control box to meet the requirements of CE certification, universally used for left and right connection models:

MKT3

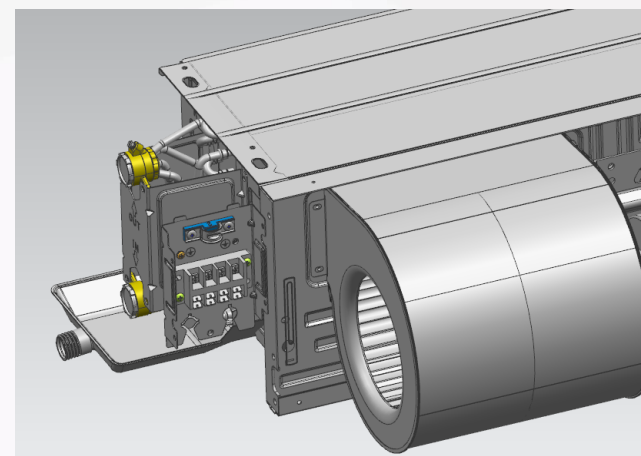


Upgrade

MK-CBS series
meets fire protection
and CE certification
requirements



Left Connection

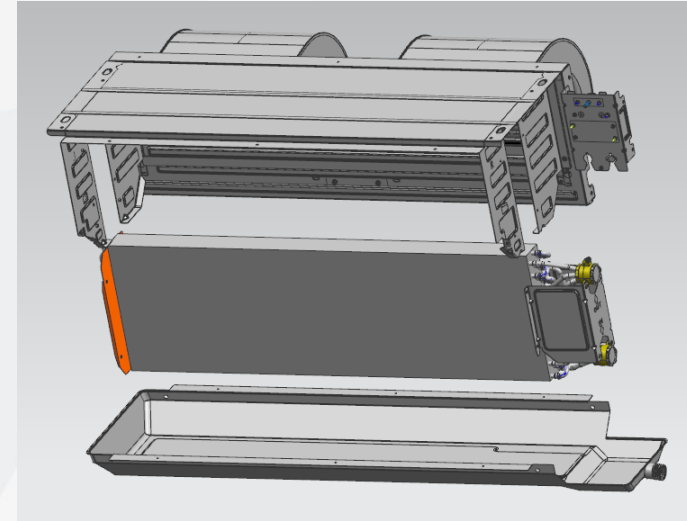
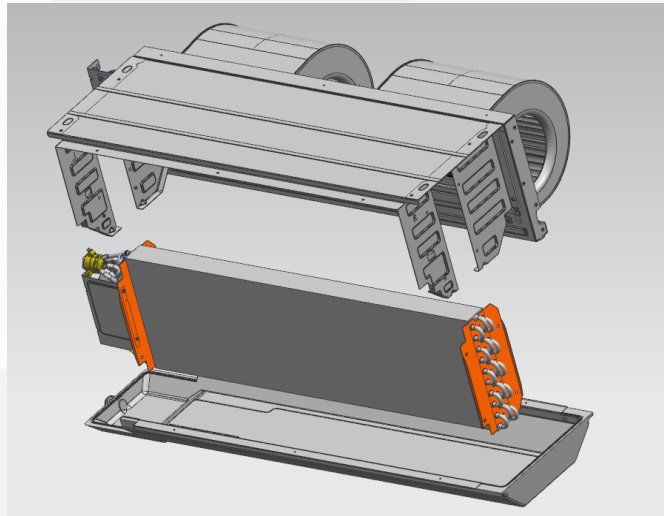


Right Connection

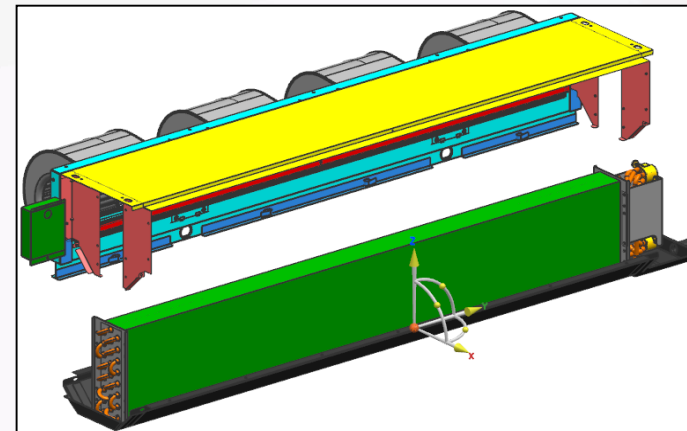
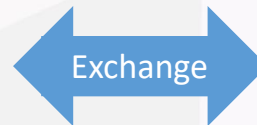
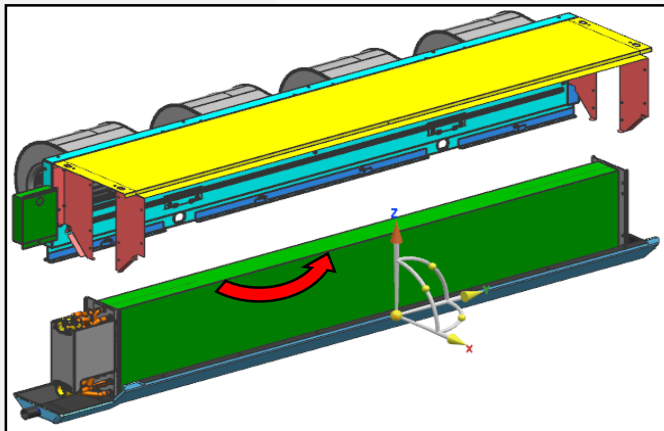
Design highlight



- ◆ The left and right connections can be exchanged on site, including water pipes and wiring:



MK-CBS series
The left and right connections can be exchanged on site, including water pipes and wiring.

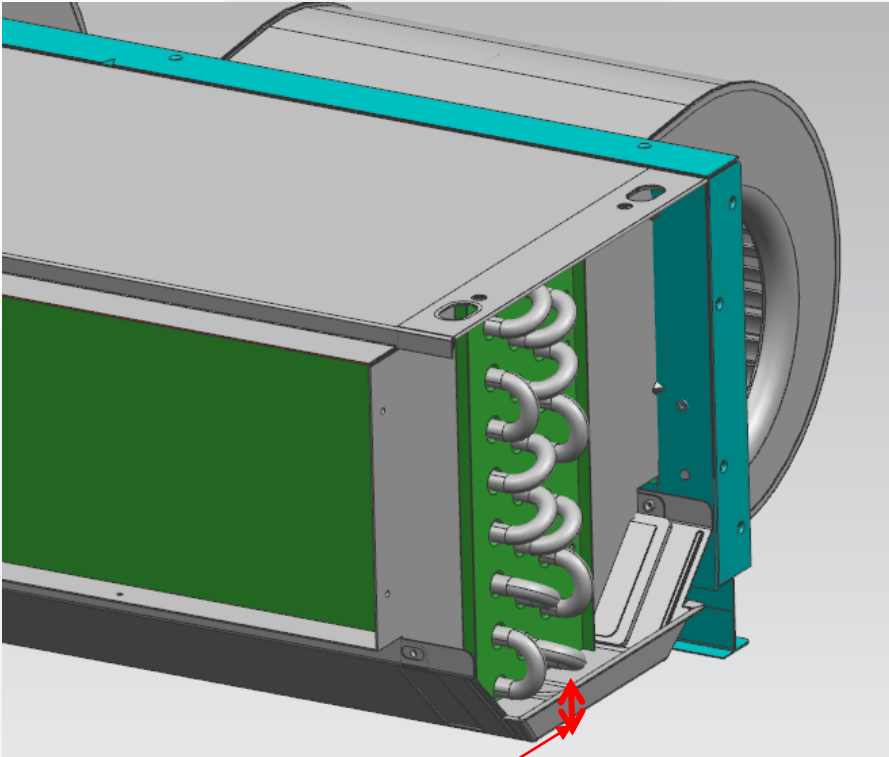


MKT3 series
The left and right connections can be exchanged on site, only water pipes.

Design highlight

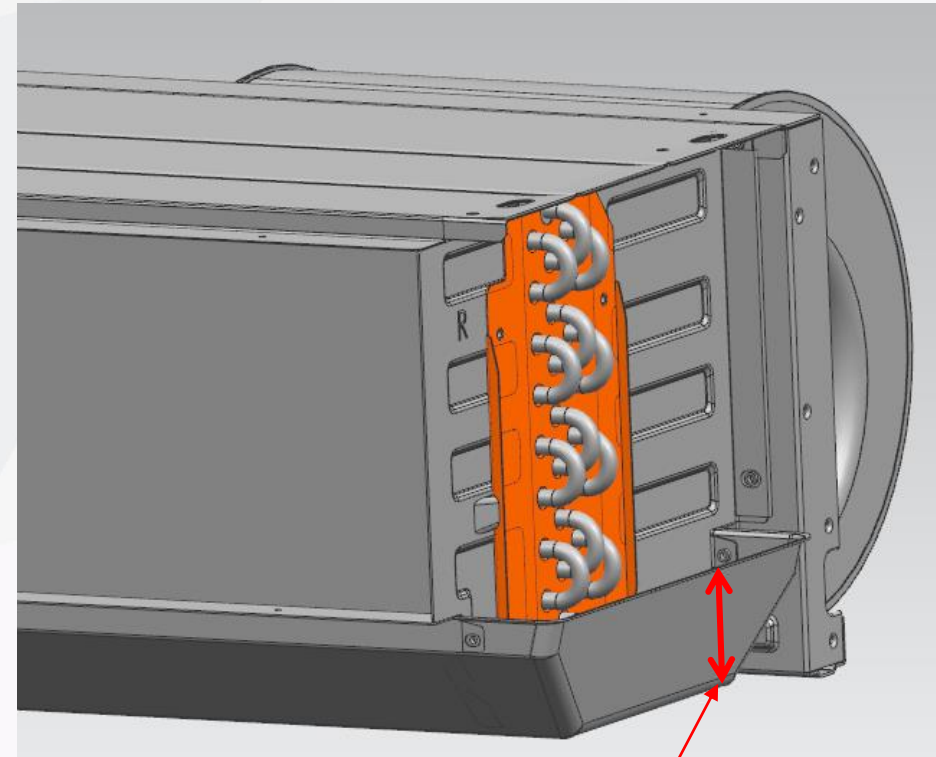


- ◆ Deeper water tray to prevent excessive condensed water from overflow (incline installation or high air humidity) in extreme working conditions, which effectively improve the reliability.



MKT3 20mm

Upgrade

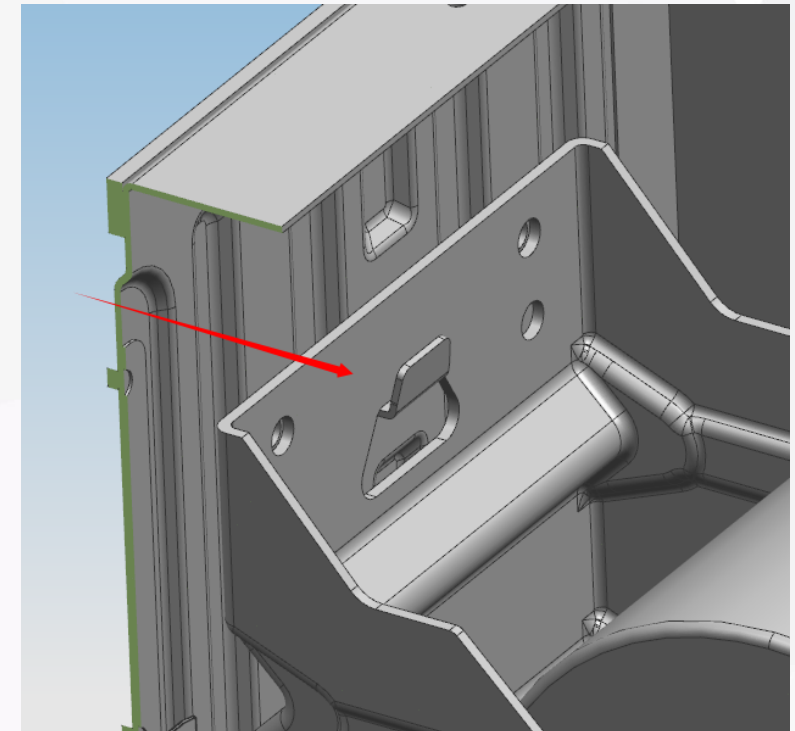
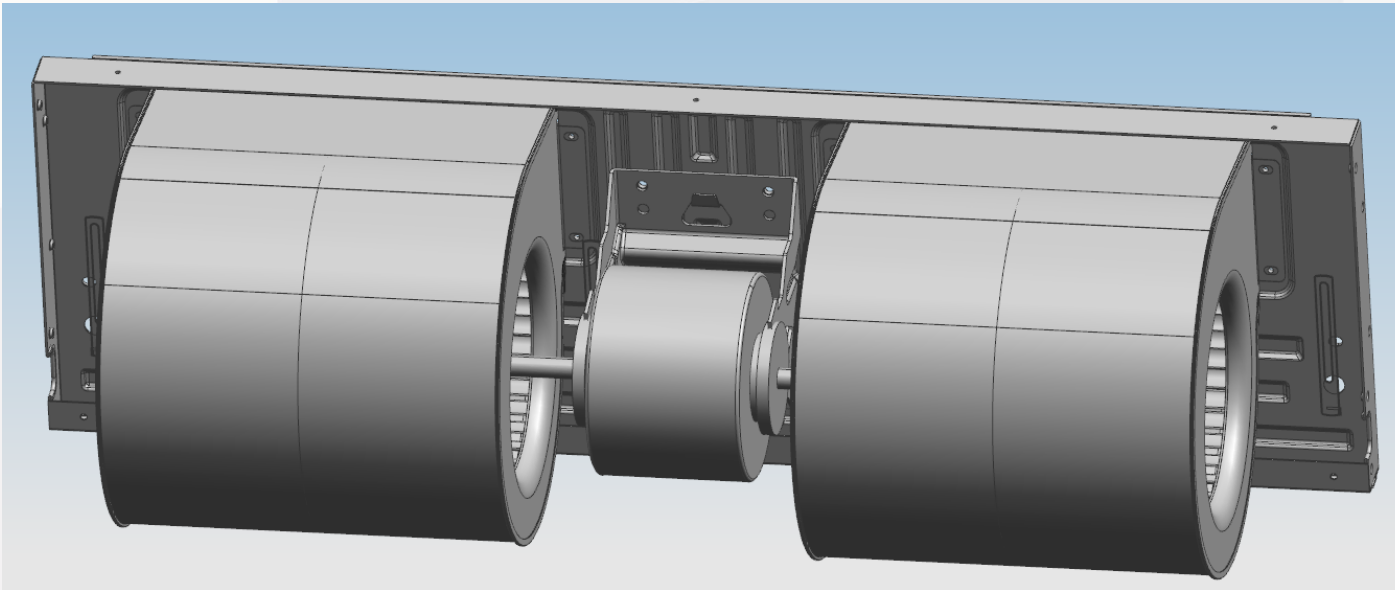


MK-CBS series 55mm

Design highlight



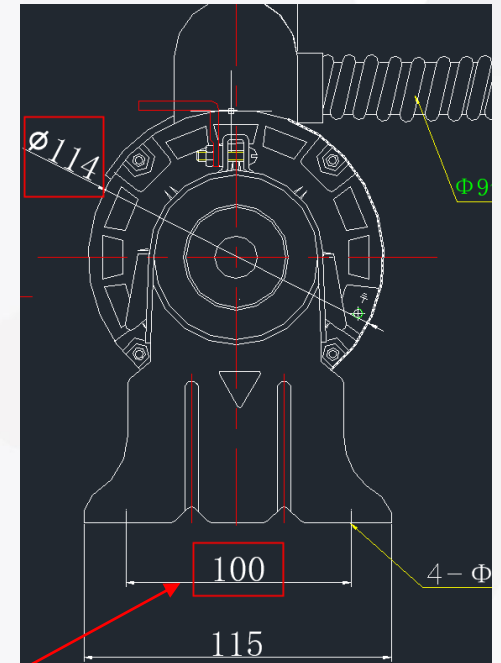
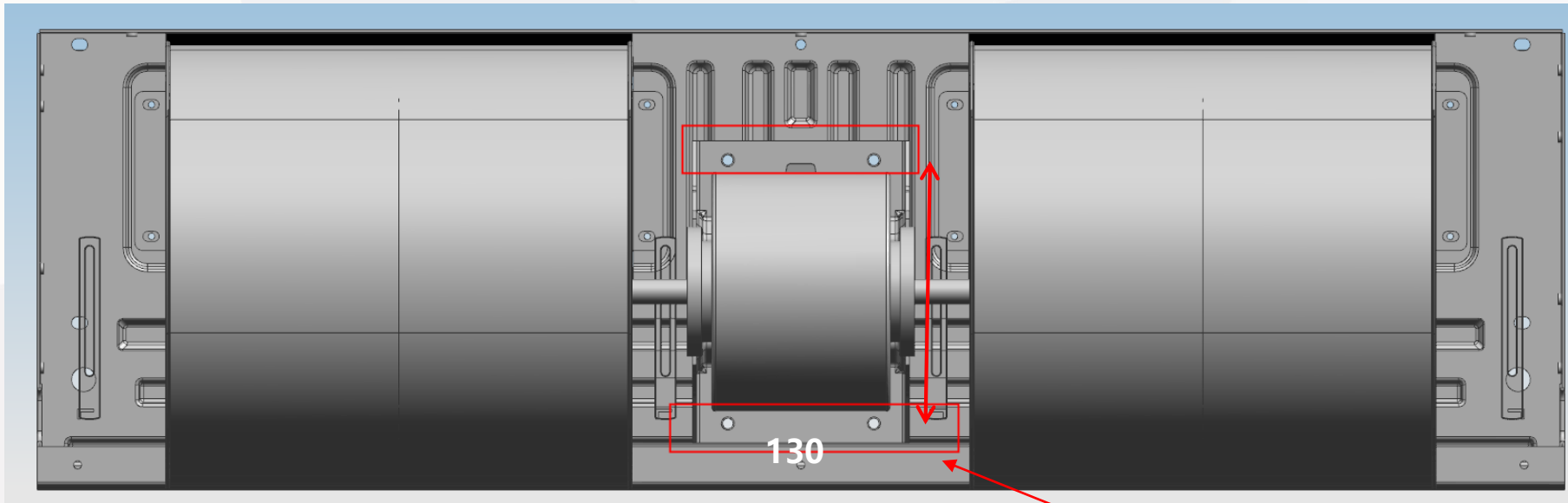
- ◆ A hook is added to the middle beam, so the installer can replace the motor by hanging the motor first and then screwing it, which is convenient for after-sales maintenance.



Design highlight



- ◆ Wider motor bracket ensures that the motor body will not hinder the fixing of the motor screws.



MK-CBS has 130mm bracket width
MKT3 has 100mm bracket width
Motor body is 114 mm

Design highlight

- ◆ Compared to other heat exchanger in the same size, it has higher heat exchange efficiency and lower water pressure drop because it uses 7mm diameter copper pipe which is efficient and of the lowest water pressure drop in the industry.



- ◆ Line-sealed, easy-to-maintain vent valve structure.

